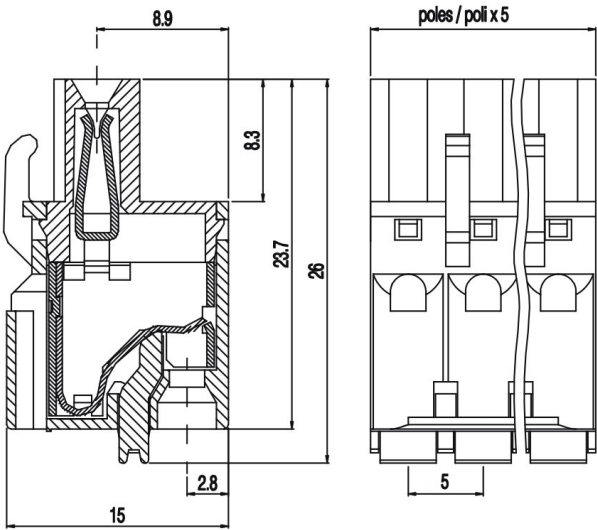


SHM\_\_-5



GENERAL INFORMATION

pitch	5 mm
Height	15 mm
Depth	23.7 mm
Dimensional class	Media
Wire section	2.5 mm² / 14 AWG
Clamp opening size	-
Wire stripping	max 10 mm
Operating temperature	-40 ÷ +130 °C

ELECTRICAL CHARACTERISTICS

Current	12 A
Voltage	250 V
impulse voltage	4 kV

MECHANICAL CHARACTERISTICS

Screw	-
Recommended torque	-

APPROVALS DATA



Current	-	-	UL 1059
Voltage	-	-	16 A factory / 16 A field
Wire section	-	-	300 V
Torque	-	-	12 AWG
FILE	-	-	-
			E178356

MATERIALS

Housing	PA - UL 94 V0
Screw	-
Clamp	-
Terminal	Tin-plated copper alloy

COLOURS

Standard		On request					
GN		GY	BK	BL	RD	YL	OG
POLES	NAME					3D FILE	
02	SHM02-5					File available	
03	SHM03-5					File available	
04	SHM04-5					File available	
05	SHM05-5					File available	
06	SHM06-5					File available	
07	SHM07-5					File available	
08	SHM08-5					File available	
09	SHM09-5					File available	
10	SHM10-5					File available	
11	SHM11-5					File available	
12	SHM12-5					File available	
13	SHM13-5					File not available for this product	
14	SHM14-5					File not available for this product	
15	SHM15-5					File not available for this product	
16	SHM16-5					File not available for this product	
17	SHM17-5					File not available for this product	
18	SHM18-5					File not available for this product	
19	SHM19-5					File not available for this product	
20	SHM20-5					File not available for this product	
21	SHM21-5					File not available for this product	
22	SHM22-5					File not available for this product	
23	SHM23-5					File not available for this product	
24	SHM24-5					File not available for this product	