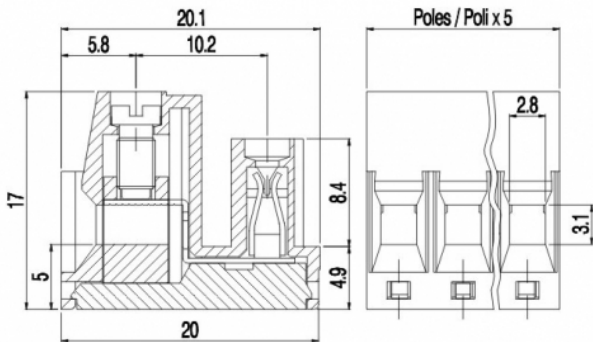
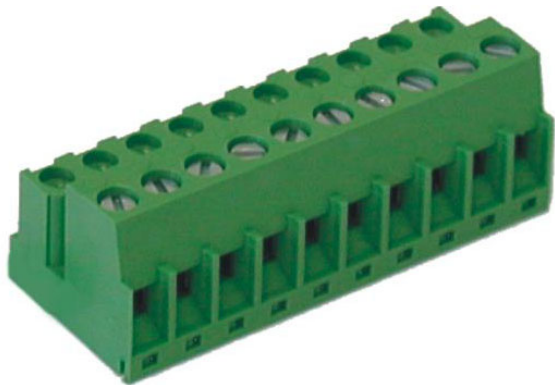


SVR__-5



GENERAL INFORMATION

pitch	5 mm
Height	17 mm
Depth	20 mm
Dimensional class	Media
Wire section	2.5 mm² / 14 AWG
Clamp opening size	2.8 x 3.1 mm
Wire stripping	max 9 mm
Operating temperature	-40 ÷ +130 °C

ELECTRICAL CHARACTERISTICS

Current	12 A
Voltage	250 V
Test Voltage	4 kVrms/60s

MECHANICAL CHARACTERISTICS

Screw	M3
Recommended torque	0.5÷0.55 Nm / 4.5÷4.9 in.lbs

APPROVALS DATA



Current	-	-	UL 1059
Voltage	-	-	12 A factory / 12 A field
Wire section	-	-	300 V
Torque	-	-	14 ÷ 30 AWG
FILE	-	-	4.5 Lb-in
			E178356

MATERIALS

Housing	PA - UL 94 V0
Screw	Galvanized steel
Clamp	Nickel-plated copper alloy
Terminal	Tin-plated copper alloy
SCIP Number	2b03b531-92df-4ed5-8cb8-d5dde059d488

COLOURS

Standard	On request
----------	------------



POLES	NAME	3D FILE
02	SVR02-5	File not available for this product
03	SVR03-5	File not available for this product
04	SVR04-5	File not available for this product
05	SVR05-5	File not available for this product
06	SVR06-5	File not available for this product
07	SVR07-5	File not available for this product
08	SVR08-5	File not available for this product
09	SVR09-5	File not available for this product
10	SVR10-5	File not available for this product
11	SVR11-5	File not available for this product
12	SVR12-5	File not available for this product
13	SVR13-5	File not available for this product
14	SVR14-5	File not available for this product
15	SVR15-5	File not available for this product
16	SVR16-5	File not available for this product
17	SVR17-5	File not available for this product
18	SVR18-5	File not available for this product
19	SVR19-5	File not available for this product
20	SVR20-5	File not available for this product
21	SVR21-5	File not available for this product
22	SVR22-5	File not available for this product
23	SVR23-5	File not available for this product
24	SVR24-5	File not available for this product